



### Cruise Weekly today

Cruise Weekly today features three pages of all the latest cruise industry news.

### Kontiki launch

**NEW** cruise line Kontiki Expeditions plans to launch later this year, despite the COVID-19 pandemic.

The brand plans to specialise in voyages on intimate, yacht-like vessels which will offer trips to off-the-beaten-path locations which only can be accessed by very small ships and yachts.

The company's initial vessel, *Kontiki*, will feature nine suites, a sun deck, a gourmet salon, two outdoor lounges, a bar, a jacuzzi, a spa treatment room and a fitness area.

She will travel two itineraries around Ecuador from Dec with 18 passengers.

## Don't call it a comeback: OOE returns

**BELEAGUERED** expedition cruise line One Ocean Expeditions (OOE) is purported to be attempting a comeback with a new ship.

Managing Director Andrew Prossin admitted in a court filing in British Columbia he is negotiating to finance a new ship, and is also talking to other expedition operators about their excess and unneeded capacity.

OOE saw its ship, the RCGS *Resolute* (pictured), arrested in Buenos Aires over the northern winter, due to money owed, with the cruise line's operations being suspended.

Prossin later detailed the cruise line's challenges in a May court filing following bankruptcy the previous month, but the OOE head is now working to collect a C\$19 million judgement against Terragelida, the company OOE had chartered two Russian ships



from.

The company has also collected an insurance payment, and is looking to reclaim over C\$3 million in its assets currently stuck aboard *Resolute*, which was sold at auction last week,

purportedly for just \$US600,000.

"If successful, this would give One Ocean direct partial ownership of its own vessel and eliminate the uncertainty and risk inherent in a vessel charter arrangement," Prossin said.

### Regent

SEVEN SEAS CRUISES™

AN UNRIVALLED EXPERIENCE™



## RETURN with REGENT

### FOR YOUR CLIENTS



**Regent Reassurance:** Cancel up to 15 days prior and receive 100% FCC\*



**Save up to 30%\*** on select voyages



**US\$1,000 Shipboard Credit** per suite



**10% Reduced Deposit**



**Best Price Guarantee**

### FOR YOU



**\$500 Visa Gift Card**

Make a booking before 31 July 2020 on any sailing departing before 31 May 2022 and receive a \$500 Visa Gift Card.\*



**Sell Three & Sail Free**

Book any three suites between 18 May - 31 July 2020 on any 2021/2022 sailing and sail free with Regent.\*

*These incentives are combinable.*

**- BOOK BY 31 JULY 2020 -**

**FIND OUT MORE**

\*Terms and conditions apply. For more information visit [rsc.com/returnwithregent](http://rsc.com/returnwithregent). \*For more information on our Partner Promotions please visit: [www.rsc.com/travelpartnerbonus](http://www.rsc.com/travelpartnerbonus) (\$500 Visa Gift Card) and [www.rsc.com/sail-free](http://www.rsc.com/sail-free) (Sell Three & Sail Free)

## What a Celebrity!



**HUNTER** Travel Group's Maddie Dann is the winner of last month's Celebrity competition.

Dann and a companion will be embarking on a cruise aboard *Celebrity Solstice* departing Sydney once cruising resumes.

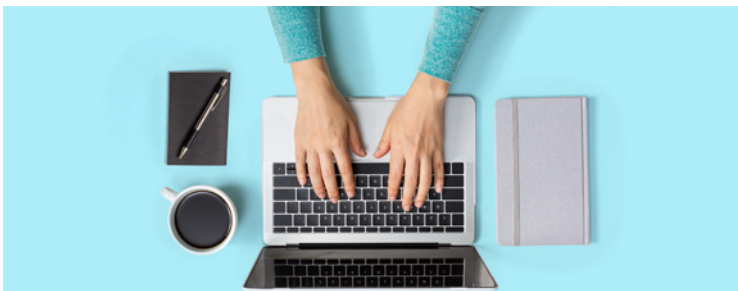
Her wellness selfie was deemed by Celebrity judges to be the best of all which were submitted to the Celebrity Trade Facebook Group, and we can see a few other members of the happy snap who may be lining up to come on the cruise with Dann!

Congratulations to our winner, and thank you to all entrants to the competition.

### Esp ban continues

**SPAIN** is maintaining its ban on cruise ships, despite the country's tourism sector reopening, according to a ministerial order.

The nation's ban on cruises will continue until the COVID-19 pandemic is brought under control.



## INTRODUCING THE TRAVEL DAILY TRAINING ACADEMY

A NEW SOLUTION TO GROW KNOWLEDGE IN THE TRAVEL INDUSTRY.

[CLICK HERE TO ENQUIRE](#)

Travel Daily

Travel Daily



Catch up on the news of the week

[CLICK HERE TO LISTEN](#)

## Destination: Explorer's Lounge

Relax and take a trip back in time with Viking Cruises



**SHIPS:** Viking Cruises' ocean ships.

**LOCATION:** Decks 7 & 8, right above the bridge.

**AFTER** the hustle and bustle of cruise life, there is no better way to slow the pace down by relaxing in one of the many lounge areas on board.

The Explorer's Lounge, available on board all of Viking's ocean ships, is the perfect place to unwind, giving passengers the chance to take in centuries of history at the same time.

Photographs of famed polar and space explorers adorn the walls, such as Roald Amundsen, a key figure of the Heroic Age of Antarctic Exploration, and Neil Armstrong, first man to walk on the moon, while the library of books that line the walls have been carefully selected by London booksellers, Heywood Hill, to reflect the Explorer's Lounge theme (pictured **inset**).

The Vikings were great traders

and the interior decor of the lounge is inspired by their trade routes and navigation methods, with cosy pelts hung over leather sofas, **pictured**, antique navigation tools such as telescopes and early maps laid out around the room, as well as impressive Turkish marble featured around the fireplace.

Guests sailing on *Viking Orion* will also be able to access the most high-tech planetarium at sea, located on the upper level.

A space to remember, in more ways than one!

**DON'T MISS:** Explorer's Lounge is home to the Norwegian deli called Mamsen's, named for the mother of Viking's Chairman, Torstein Hagen.

The venue's signature dish is delectable, traditional waffles with brown cheese....YUM.





## Policy extensions

**BLUE** Lagoon Cruises has extended its buy now, travel later sale (**CW** 11 Jun), which is now available until the end of Jul.

55% off is applicable on the cruise line's three-, four- and seven-night departures, with open-dated travel available through to 30 Jun 2022.

Dream's Cruise As You Wish policy is also extended, allowing all new and existing bookings made for *Genting Dream* sailings prior to or on 09 Apr 2021 the flexibility to cancel up to 48 hours prior to sailing.

Those cancelling will receive a 100% future cruise credit to be redeemed on any Dream or Star Cruises sailing embarking on or before 30 Sep 2021.

## New Syd noise policy

A **NEW** port noise policy for Sydney's Glebe Island and White Bay has been drafted.

The Port Authority of New South Wales has considered previous community feedback in developing the draft policy, which is the first for its kind in Australia.

The Authority also worked with the Environmental Protection Agency on the policy, which is now available for review for the community to have its say.

The policy aims to manage noise in a way that is "acceptable to the community, port users, and other stakeholders while recognising and optimising Glebe Island and White Bay's ongoing, long-term status as a working port."

The port noise policy includes guidelines and explanations of noise triggers for individual ships

visiting Glebe Island and White Bay, as well as consequences if triggers are exceeded; guidelines and explanations of precinct-wide landside noise criteria; a framework to guide future noise assessments and planning controls; and a goal for gradual long-term reduction of ship noise while at berth.

The approach will see the entire precinct's noise attempted to be combated, as opposed to noise produced by individual operators, although each ship visiting the Port will be required to comply.

Review and feedback of the draft is being undertaken until 10 Aug, with online information sessions to be held on 22 Jul at 5pm and 23 Jul at 12pm.

To have your say, **CLICK HERE**, or phone 9296 4595.



### CLIA UPDATE

with Joel Katz  
MD, CLIA Australasia

A homecoming is a right **LAST** week's International Day of the Seafarer provided a timely opportunity for our industry to pay tribute to the many women and men who make up cruise ship crew and who play such an important role in creating memorable experiences for our guests.

The occasion provided a chance to celebrate crew service and achievements on social media, but cruise lines are also working hard behind the scenes to care for crew in this difficult COVID-19 environment.

CLIA cruise lines have successfully repatriated thousands of crew members since the global suspension of operations.

These efforts have proven extremely complex, made even more complicated by differing policies across the many countries represented by the diverse cruise ship workforce.

Flight restrictions and port closures created significant challenges, but the cruise lines have remained singularly focused on the health and safety of those onboard and on doing whatever they can to bring crew home.

The right of seafarers to be repatriated to their home country is a fundamental human right.

We are grateful to the ports and governments that allowed access and safe harbor for cruise ships so they could complete their journeys.

We ask for the same support to ensure the safe repatriation of crew members still making their journeys home.



## Nth Eu savings

**ADVENTURE** Canada's range of Northern Europe expedition voyages is currently on sale through Cruise Traveller, with no single sup also available.

The deal offers a free hotel stay, with 15% off across five of Adventure Canada's voyages, visiting the Basque Country, Iceland, Greenland and the Scottish Isles.

The earlybird savings are available on all bookings made before 31 Oct, with the cruise-and-stay packages leading in at US\$5,295ppts.

The cruises are aboard Adventure Canada's 198-pax *Ocean Endeavour*.

For more, **CLICK HERE**, or call on 1800 507 777.

## World Europa keel laid

**MSC** Cruises and shipyard Chantiers de l'Atlantique have celebrated a key construction milestone for the LNG-powered *MSC World Europa* (pictured, **CW** 05 Nov 2019).

The coin ceremony took place Mon at the ship's keel-laying.

*World Europa*, which is scheduled to enter service in 2022, will feature a 50-kilowatt demonstrator system incorporating solid oxide fuel cell technology, and use liquefied natural gas to produce electricity and heat on board, the first time an LNG-powered fuel cell has been used on a cruise ship.



The combined solution will reduce emissions of greenhouse gases by about 30% compared to a conventional LNG engine, with no emissions of nitrogen oxides, sulphur oxides or fine particles.

It also offers the advantage of being compatible with LNG.