



Cruise Weekly today

CRUISE Weekly today features three pages of all the latest cruise industry news, including a **photo page** from **Norwegian Cruise Line**.

Jingle all the waves!

P&O Cruises Australia is celebrating 90 years of Christmas cruising magic, nine decades since its inaugural Xmas voyage set sail from Sydney in 1932.

The cruise line said it is "overjoyed" to be resuming the tradition, with its three ships to collectively host more than 8,300 guests this Xmas, as they depart from Sydney, Melbourne, and Brisbane.

Around 700 metres of garlands and 46 decorated Christmas trees have been installed across the three P&O ships for the cruises.

Sommer: *Spirit* the perfect ship for Aus

EXCLUSIVE

NORWEGIAN Cruise Line's *Norwegian Spirit* is the perfect ship for the Australian market, following her USD\$100 million bow-to-stern revitalisation, President & Chief Executive Officer Harry Sommer told **CW**.

Spirit sailed into Sydney Harbour for the very first time on Wed (**CW** 21 Dec), an occasion which saw Norwegian make its return to Australian waters after three years.

The ship's revitalisation is the most expensive and extensive Norwegian has ever undertaken, and the result is the ideal vessel for cruising in Australian waters.

"We're super proud of *Spirit*, after this 100-plus million dollars we've spent, she is like a new ship, she's the closest thing we have to *Prima*, and *Prima* doesn't fit under the [Harbour Bridge], so this was the next best choice,"



Sommer said.

"We only have three ships in our fleet that can fit under the Harbour Bridge, and as you know, with the situation with the Overseas Passenger Terminal being so jam-packed and there only being one berth, it's hard to get perfect itineraries.

"We decided we would rather take a ship where we can get much more flexibility in our interior design."

Vice President & Managing Director APAC Ben Angell said in addition to *Spirit* fitting under the

Bridge, she is the perfect size for the itineraries she is operating.

"There's no shortage of family options down here for cruising, big ship options, but there's such a large proportion of Australian cruisers who love a slightly smaller ship...sailing phenomenal itineraries, immersive itineraries, and also that has so many dining choices on board," he added.

Angell said *Spirit* also provides an opportunity for NCL to market its cornerstone fly-cruises to Europe and Hawaii to Australians.

Pictured: Angell and Sommer.

Merry Christmas

To all our Travel Industry friends
From the Cruise Weekly team

Back on 3rd January for our first edition in 2023



Fri 23rd Dec 2022

NORWEGIAN Cruise Line has marked its return to Australian waters after three years, with a party aboard *Norwegian Spirit* on Wed night.

The ship sailed into Sydney Harbour for the first time earlier this week, with guests from more than 20 countries on board.

Spirit showcased her USD\$100 million bow-to-stern revitalisation, the most expensive and extensive ever undertaken by Norwegian.

The ship will offer a choice of eight open-jaw sailings between Dec and Mar from Sydney, exploring destinations like Melbourne, Burnie, and Eden.

Spirit will then return for a second homeporting season from Sydney beginning Dec 2023.

"We're thrilled to finally welcome *Norwegian Spirit* to

Australia - she is well and truly worth the wait," Vice President & Managing Director APAC Ben Angell said.

"We know Australians love our contemporary, laidback style of cruising, as well as the outstanding value only an NCL cruise can offer."



NORWEGIAN *Spirit* arrives into Sydney Harbour.



VICE President & Managing Director APAC Ben Angell, President & Chief Executive Officer Harry Sommer, and Director of Sales Damian Borg.



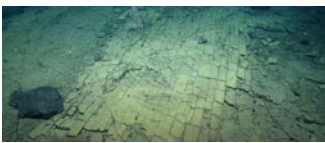


SCIENTISTS have found a “yellow brick road” in a never-before-seen spot in the Pacific Ocean.

The expedition to the deep-sea ridge, just north of the Hawaiian Islands, has revealed an ancient dried-out lake bed, which looks as if it is paved with bricks.

The eerie scene was chanced upon by the exploration vessel *Nautilus* earlier this year, while surveying the Lili'uokalani ridge within Papahānaumokuākea Marine National Monument.

Although some of the scientists on the expedition joked it could be the “road to Atlantis”, it is in fact volcanic rock which has fractured in a way that looks strikingly similar to bricks.



Merry Xmas from CW

TODAY is the last issue of *Cruise Weekly* for the year, as the Business Publishing Group (BPG) team enjoys a break over the Christmas and New Year period.

The first issue of 2023 will be published on 03 Jan.

From everybody at the BPG team, we wish you a very merry Christmas and a happy New Year.

PTM goes double Dutch

THE recent inaugural departure of Tauck's Dutch Waterways cruise was joined by TravelManagers' Kerstin Rheinlander, who was one of just three Australian travel advisors aboard.

Rheinlander, who is TravelManagers' representative for Sinnamon Park, Queensland, was invited aboard *Inspire* to participate in an exclusive famil hosted by Tauck, including its National Account Manager Australia Helen Eves.

Eight agents from the United States joined their three Australian counterparts for the eight-day journey exploring the cities of the Netherlands, including Amsterdam, Kampen, Enkhuizen, Hoom, Rotterdam, and The Hague.

For Rheinlander, highlights of the cruise included sampling local delicacies such as Herring, cheese, chocolate, fried ragout balls, and craft beer, during a walking food tour of Rotterdam; dinner at a private members-only club in The Hague, and a personal, after-hours tour of the Mauritshuis, where she was lucky enough to lay eyes on Johannes Vermeer's *Girl with a Pearl Earring* (pictured).

The cruise also coincided with the Floriade: a world-famous garden festival which takes place once per decade, and Tauck ensured its guests had early access, with private guides.

“Tauck is renowned for its all-inclusive offering and VIP experiences, so it was great to see this in action” Rheinlander said.



“The cruise and tour directors are amazing at assessing the desires of the guests and tailoring each cruise to suit, and effortlessly tweaking the itinerary to deal with the sometimes unpredictable weather.”

“What an incredibly memorable way to experience my first river cruise and my first time exploring the Netherlands beyond the city limits of Amsterdam.”

According to TravelManagers Executive General Manager Michael Gazal, Rheinlander is one of many personal travel managers to take up famil opportunities this year, eager to gain up-to-date, first-hand experience of the many travel experiences on offer as well as current travel conditions and border control measures.

“It's great to see PTMs making the most of the many wonderful famil opportunities being offered by our key suppliers, ensuring that they are well-equipped for advising their clients with reliable itinerary planning and guidance for their travel plans and rekindling their love of travel post-pandemic,” he said.

Coral to miss two New Zealand calls

PRINCESS Cruises' *Coral Princess* will miss her scheduled visits to Fiordland and Dunedin in New Zealand on her current itinerary, as she undergoes additional hull clearing.

Coral will require the removal of a species of mollusk not native to the area so there is no unintended transfer in particularly sensitive areas of New Zealand, in accordance with guidance from the country's Ministry for Primary Industries.

In lieu of travelling to Fiordland and Dunedin, *Coral* will now spend an a few extra days at sea, before spending Christmas in Christchurch as scheduled.

Coral will still make her scheduled calls to Wellington, Napier, Tauranga, and Auckland.

Croatia borders

CROATIA will become a part of the Schengen Area from next year, and will adopt the Euro as its official currency.

Maritime border checks between Croatia and other Schengen countries will be removed, while air border checks between Croatia and other Schengen states will be removed, on 26 Mar.

Land border checks between Croatia and Hungary and Slovenia will also be removed.

For a full report of travel advice from the DFAT, **CLICK HERE.**