



Cruise Weekly today

CRUISE Weekly today features three pages of all the latest cruise industry news.

SCL heads north

SEABOURN Cruise Line's (SCL) *Seabourn Sojourn* will embark on a series of voyages across The British Isles, Norwegian Fjords, and Iceland as part of its Northern Europe itineraries for the summer 2025 season.

Sojourn will visit more than 40 destinations in 12 countries on nine itineraries from May to Aug.

Voyages will range from seven to 24 days, with departures from Dover, Reykjavik, and Greenock.

Guests can explore the lochs of Scotland, chase the midnight sun in Norway, and experience Iceland's scenery.

Arctic winter for Ponant's *Le Commandant Charcot*

PONANT'S *Le Commandant Charcot*, the only high polar icebreaker cruise vessel, is returning to the Arctic for the 2026-27 winter season.

There will be 16 departures from Oct 2026 to Mar 2027, exploring the Baltic Sea, the St. Lawrence River, Norway, and Greenland, experiencing moments in the heart of the Arctic winter seen by few.

A diverse range of activities are scheduled, including snowshoeing through the boreal forest, dog sledding or reindeer sleigh rides, and spotting the northern lights.

One of the highlights of the season will be 'The Gulf of Bothnia, on the Gateway to the Arctic' cruise, between Sweden and Finland.

The itinerary includes winter activities such as ice fishing in the boreal forest, as well as visits to historic cities like Rauma.



The eight-night cruise departs four times between 22 Dec 2026 and 15 Jan 2027.

There is also 'The St. Lawrence River in the Heart of the Boreal Winter' voyage, which cruises from Quebec to La Baie.

This 14-night trip departs twice,

on 13 and 27 Feb.

"This season, *Le Commandant Charcot* takes on a full winter journey in the north, embodying her spirit of exploration with itineraries centred around ice and snow," Captain Patrick Marchesseau said. *MS*



There's MORE to a holiday in Europe with NCL®

Your clients can immerse themselves in more charm in Northern Europe, witness more iconic sights in the Mediterranean or hop more idyllic islands in the Greek Isles with NCL®. They can take their pick from 11 contemporary ships, sailing from 14 departure ports with over 180 unique itineraries in the 2025/26 seasons. Plus, they can explore even more with longer times in port and many sailings featuring late stays and overnights*.



Norwegian Pearl®, Mykonos, Greece

experience **MORE** at sea™

To book or for more information call **1300 255 200**

*On select sailings. ©2025 NCL Corporation Ltd. NCL Australia Pty. Ltd. ABN 80 607 578 781. Ships Registry: Bahamas and USA. 2105565 01/2025.

7-Day Mediterranean
From Barcelona
to Rome (Civitavecchia):
Nice, Florence & Amalfi Coast
Norwegian Epic®
May – Oct 2026



9-Day Baltic
From Copenhagen
to Helsinki:
Germany, Norway & Sweden
Norwegian Sun®
Jun – Sep 2026



10-Day Greek Isles
From Venice (Trieste)
to Athens (Piraeus):
Santorini, Mykonos & Croatia
Norwegian Pearl®
Jul & Sep 2025



10-Day Greek Isles
From Venice (Ravenna)
to Istanbul:
Santorini & Athens
Norwegian Viva®
May, Jul – Aug 2026





Crystal Wellness

CRYSTAL will set sail on its second annual Wellness Retreat Cruises this year, where guests can enjoy fitness, yoga, mental well-being, nutrition, and scientific education programs.

The cruise line will offer a 15-night journey from Lisbon to Tema from 26 Nov-11 Dec, or a 12-night sailing from Tema to Cape Town from 11-23 Dec, both on board the 650-pax *Crystal Symphony*.

Highlights of the 2025 Wellness Retreat Cruises include fitness and sports programs led by Minna McHale, which will see guests participate in functional training, strength & balance classes, pool-based exercises and guided walking sessions, all tailored to individual needs and abilities.

This program will include hosted pickleball and golf clinics led by professionals.

There will also be morning yoga and mindful meditation.

"Wellness on Crystal is a holistic approach to health, focusing on finding balance across the many dimensions of your being," Crystal Head Nutritionist Dalila Roglieri said.

"Our Wellness Retreat Cruises are designed to show travellers just how beautiful and fulfilling their personal wellness journey can be - especially at sea."

WLCL scores a touchdown



WORLD'S Leading Cruise Lines (WLCL) - consisting of Carnival Cruise Line, Cunard Line, Holland America Line, P&O Cruises Australia, Princess Cruises, and Seabourn Cruise Line - hosted its eighth annual Super Bowl party in Brisbane on Mon.

The event - the biggest on record for WLCL - treated more than 60 trade partners to a day of football, fun, fried food, and their own personalised jerseys.

Guests enjoyed watching the Philadelphia Eagles soundly defeat the Kansas City Chiefs at

Brisbane's premier Irish pub Finn McCool's Fortitude Valley. **MS Pictured** is the WLCL team:

Carnival National Account Manager Lance Dye, Holland America Key Account Manager Helen Courias, Princess Sales Operations & Key Accounts Specialist Elly Eves, Cunard Key Account Manager Lauren Togher, Carnival Key Account Manager Sarah Miller, and Cunard Key Account Manager Nicky Fardon, with Detroit Lions superfan, Princess Head of Sales Operations Brett Wendorf.

Costa WC 2027

COSTA Cruises has opened bookings for its 2027 World Cruise, which will see *Costa Deliziosa* discover 47 destinations in 139 days.

The new itinerary will visit five continents and cross three oceans, departing 25 Nov 2026 from Savona, Italy.

There is also a 100-day cruise available from San Francisco.

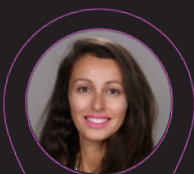
Destinations will include east and west coast of the United States, Hawaii, Tahiti, Fiji, Australia, Japan, Singapore, South East Asia, Africa, and Carnival Corporation's private island, Half Moon Cay.

The cruise will overnight in ports such as Sydney, New York City, Miami, and more.

"With the World Cruise 2027 we want to offer a truly unique and unforgettable experience, combining the exploration of iconic places with the proposal of exclusive destinations, some of which have never been touched before by our itineraries," Vice President Worldwide Sales Luigi Stefanelli said.

"With this edition, we want to redefine and innovate the concept of travel around the world, offering a once-in-a-lifetime experience for those who dream of an extraordinary adventure and the opportunity to discover the world with the quality and hospitality that distinguish Costa."

SPEAKERS



Nicola Veltman
CEO,
1000 Mile Travel



Steve Labroski
CEO,
itravel



Wendy Wu
Founder,
Wendy Wu Tours

HOME EX

HOME AGENT
VIRTUAL
EXPERIENCE

REGISTER FREE



Stay Updated

on the latest cruise news

Follow Cruise Weekly on social media to get your cruise news first

Facebook Instagram CRUISE WEEKLY



A MODERN-DAY version of the story of the Jewish prophet of Jonah has played out in Patagonia, with a whale briefly swallowing a kayaker.

The moment was caught on camera, with the kayaker, Adrian Simancas, luckily unharmed in the incident.

He was paddling with his father in the Strait of Magellan, before the two encountered the humpback, which engulfed him before spitting him out.

"I thought I was dead," Simancas told the AP.

"I thought it had eaten me, that it had swallowed me" - **CLICK HERE** to watch the video.

Quark new charter

QUARK Expeditions will charter Atlas Ocean Voyages' *World Voyager* for the 2026/27 Antarctica season.

The new program will offer marine mammal-focused expeditions and a helicopter-supported journeys across the Antarctic Circle.

All *World Voyager* departures will also include real scientific research with Quark's brand-new science program.

There will also be more opportunities to camp on Antarctic ice and explore rarely visited regions during pristine early-season conditions.

Those booking before the end of May can score 15% off.

APT loves Canada deerly



APT'S 2026 Canada and Alaska pre-release is out now, with four cruisetours highlighted.

The 22-day 'Rockies Odyssey and Alaska Cruise' remains a guest favourite, priced from \$16,395 per person, twin share.

The journey begins in Vancouver, before travelling through the Canadian Rockies aboard the Rocky Mountaineer in GoldLeaf service.

Guests will enjoy stays at Fairmont Chateau Lake Louise and Banff Springs, after which passengers will set off on a seven-night Alaskan cruise in a Verandah stateroom with Holland America Line, exploring the scenic Inside Passage, Glacier Bay National Park, and key ports such as Juneau and Ketchikan.

Also available is the 15-day 'Rockies Icons and Alaska Cruise', priced from \$12,995 per person, twin share.

The itinerary combines icons and lesser-known wonders, with guests able to stay at the Castle in the Rockies and relish a Rocky Mountaineer rail journey, before concluding their holiday with an Inside Passage Alaska cruise.

Those seeking an extended adventure can join the 25-day 'Rockies with Alaska by Sea and Land' journey, which travels beyond the Inside Passage, sailing through Glacier Bay and College Fjord, with passengers to then arrive in Anchorage, Alaska's most populous city.

Guests will experience Denali National Park, a stay in a Denali Suite at McKinley Chalet Resort, and a Tundra Wilderness Tour, with the chance to spot grizzlies, moose, and wolves.

This itinerary is available from \$20,995 per person twin share.

The 17-day 'Eastern Canada and New England Cruise', from \$11,895 per person, twin share, begins with an in-depth discovery of Toronto, and a stay overlooking Niagara Falls.

This is followed up with a two-night visit in Ottawa, before an immersion into French-Canadian culture in Montreal and Quebec City (**pictured**).

Guests are then guided along the coastlines of the Maritimes with Holland America, after which they will cross into the United States to explore Maine. *MS*

Cruise Calendar

Current ports of call in Australia.

SYDNEY	
<i>Pacific Adventure</i>	14 Feb
<i>Seabourn Quest</i>	14 Feb
<i>Royal Princess</i>	15 Feb
<i>Island Princess</i>	16 Feb
<i>Silver Muse</i>	16 Feb
<i>Carnival Splendor</i>	17 Feb
<i>Pacific Adventure</i>	17 Feb
<i>Arcadia</i>	18 Feb
<i>Azamara Pursuit</i>	18 Feb
<i>Azamara Onward</i>	19 Feb
<i>Viking Venus</i>	19 Feb
<i>Diamond Princess</i>	19 Feb
<i>Azamara Pursuit</i>	20 Feb
<i>Ovation of the Seas</i>	20 Feb
<i>Viking Venus</i>	20 Feb
<i>Viking Orion</i>	20 Feb
BRISBANE	
<i>Quantum of the Seas</i>	14 Feb
<i>Pacific Encounter</i>	15 Feb
<i>Carnival Luminosa</i>	16 Feb
<i>Diamond Princess</i>	17 Feb
<i>Silver Muse</i>	18 Feb
<i>Pacific Encounter</i>	19 Feb
MELBOURNE	
<i>Norwegian Sun</i>	15 Feb
<i>Viking Venus</i>	16 Feb
<i>Azamara Pursuit</i>	16 Feb
<i>Royal Princess</i>	17 Feb
<i>Viking Orion</i>	18 Feb
<i>Island Princess</i>	18 Feb
NEWCASTLE	
<i>Diamond Princess</i>	19 Feb
CAIRNS	
<i>Le Jacques Cartier</i>	16 Feb
<i>Zuiderdam</i>	18 Feb
<i>Carnival Luminosa</i>	19 Feb
<i>Seabourn Quest</i>	20 Feb
TOWNSVILLE	
<i>Silver Whisper</i>	18 Feb
DARWIN	
<i>Viking Sky</i>	17 Feb
<i>Queen Elizabeth</i>	18 Feb