

### Cruise Weekly today

**CRUISE Weekly** today features three pages of all the latest cruise industry news.

### Villa Vie to expand

**VILLA** Vie Residences has appointed Christopher Cox to lead the expansion and launch of its new luxury brand, Project Lumina.

The new tier of refined, residential ocean living will complement Villa Vie's existing contemporary offering aboard *Villa Vie Odyssey*, with Cox to oversee vessel acquisition, full-ship conversion planning, architectural programming, sales and marketing strategy, investor engagement, and global partnerships.

Villa Vie also teased a new addition to its fleet, set to be announced in the coming weeks, under a new brand.

## MSC breathing fire over *World Asia*

**MSC** Cruises is marking the 12-month countdown to the debut of its new ship *MSC World Asia*, unveiling a dozen new details of the upcoming flagship.

*World Asia* will sail seven-night Mediterranean itineraries starting 04 Dec 2026, featuring design elements reflecting Asia's rich culture, art, and landscapes.

The centrepiece of this will be a 12-metre-long, nine-metre-wide dragon sculpture (**pictured**) in the ship's World Promenade, suspended 10 metres in the air.

This stainless-steel sculpture will be adorned with nearly 700 mirrors and 3,000 LED lights, as it illuminates the ship.

There will also be a new pan-Asian street food venue, combining a dining experience with a dedicated bar and outdoor terrace, offering both dine-in and on the go options.

The restaurant will focus on



Southeast Asian cuisine, including flavours from Singapore, Thailand, Laos, Hong Kong, Vietnam, and Indonesia.

MSC's top deck family fun area, including The Harbour and The Clubhouse, have also received Asian-inspired redesigns.

*World Asia* will sail in the Mediterranean during the winter

2026/27 season, calling at some of the region's most captivating destinations, such as Barcelona, Marseille, Genoa, Civitavecchia, Messina, and Valletta.

She will then offer seven-night itineraries to Barcelona, Marseille, Genoa, Naples, Messina and Valletta during the summer 2027 season. *MS*

# 'Spektakulært'

## BLACK FRIDAY SALE

**FINAL DAYS**



It's not just the views that are spectacular with Hurtigruten's Black Friday Sale. Get up to 50% off Hurtigruten cruises along Norway's famously picturesque coastline when you book before December 8, 2025, and your client could witness the Northern Lights or the awe-inspiring Midnight Sun at a price that's just as amazing. Or as the locals would say... 'Spektakulært!' **Don't miss out. Call our local Coastal Specialists on 1300 151 548 or visit [hurtigruten.com](https://www.hurtigruten.com)**

**SALE NOW ON**  
UP TO **50% off\***

**HURTIGRUTEN**  
Live the legend of Norway

\*T&Cs apply. See website for full details.



Today's issue of *Cruise Weekly* is coming to you courtesy of Holland America Line, aboard *Noordam*.

OUR voyage is drawing to an end, with guests today enjoying their final port of call in Victoria, before another sea day prior to disembarking in Sydney on Sun.

Melbourne offers a huge array of options for shore excursions, while some on board have also chosen to head out on their own on the easy tram ride to the city.

There are markets galore celebrating the festive season, while the just-opened F1 Exhibition at the Melbourne Convention Centre is also a popular option, building on the excitement around local F1 hero Oscar Piastri.

### Virgin's Alaska pass

**VIRGIN** Voyages has launched its 2026 Alaska Summer Season Pass, which offers 30 days of glaciers and midnight sunsets.

The Season Pass format has been trialled successfully in other regions in the world, and is now available in Alaska from as little as \$26,000.

## Azamara 2028 World Cruise



**AZAMARA** Cruises has announced its 2028 World Cruise, which will visit six continents, 40 countries, and almost 100 ports.

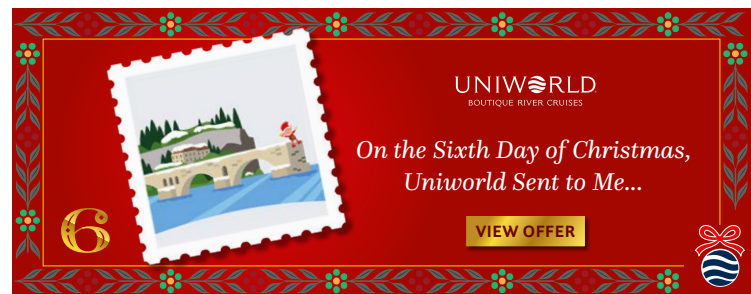
The 175-night cruise will sail aboard *Azamara Onward* and feature 68 late nights and overnights - more than any other world cruise in 2028.

*Onward* will depart Miami on 05 Jan 2028, making her first stops in the Southern Caribbean and Latin America, calling on Aruba and Colombia, before a Panama Canal transit and visits to Ecuador and Peru.

Guests will have the opportunity to visit Easter Island, Chile, and explore the UNESCO World Heritage Site of Rapa Nui National Park - Land of the Shark Spirits, as well as Pitcairn Island, home to fewer than 50 residents.

Guests will then enjoy an overnight in Tahiti and Bora Bora after crossing the Pacific, before venturing on to New Zealand and Australia, including stops in Christchurch, Sydney, and Cairns.

The cruise continues through Asia with calls in Indonesia, Hong



UNI<sup>W</sup>ORLD  
BOUTIQUE RIVER CRUISES

On the Sixth Day of Christmas,  
Uniwold Sent to Me...

[VIEW OFFER](#)

Kong, Vietnam, Thailand and Singapore, then sails across the Indian Ocean to Sri Lanka and Southern Africa.

It is there that guests will visit South Africa and Namibia before continuing north to the Canaries.

The cruise then carries on to Morocco, Barcelona, the French Riviera, and Italy, including Rome, the Amalfi Coast, and Sicily, before cruising through Croatia, the Greek Isles, and Turkey, before concluding in Athens on 28 Jun.

The entire cruise is divided into 14 segments for those who cannot join for the full journey.

On board, *Onward* features seven restaurants, cafes and lounges, a pool, spa, and various stateroom options including interior, oceanview, veranda, suites, and more.

Passengers and travel advisors will also have access to Azamara's new World Cruise Desk, a pre-cruise concierge providing personalised assistance with travel arrangements and other special requests. *MS*

### Swan photo cruise

**SWAN** Hellenic has unveiled its new 'Photojournalism at Sea' program, travelling from Valparaíso to Callao on *Vega*.

The 10-day cruise explores Chile and Peru's Pacific Coast - [CLICK HERE](#) for more.



# BLACK FRIDAY

**UP TO 40% OFF**

Limited Inventory.

Sailing soon.

[Learn More →](#)

## EXPLORE NORTHERN EUROPE

### - THANKFUL for TRAVEL -

**FREE ALL-INCLUSIVE PACKAGE**  
**+ REDUCED DEPOSIT**

AND SO MUCH MORE

[VIEW OFFER](#)

\*T&C's apply, click to learn more

For more information, contact 1300 749 875 or email [reservations@windstar.com.au](mailto:reservations@windstar.com.au)





**A RELIC** from the famous wreck of the *Edmund Fitzgerald* has been returned to its rightful owner after a long legal battle.

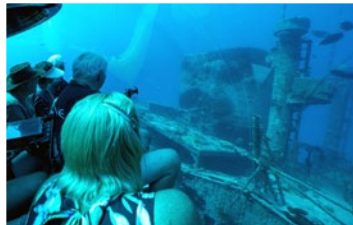
The state of Michigan is giving up ownership of the rare relic - one of the ship's lifebuoys - just weeks after it strangely obtained it through a settlement in a completely unrelated lawsuit.

Larry Orr, the owner of the buoy, is getting his possession back, with the state to chip in US\$600,000 to settle his lawsuit over police misconduct, after his rights were allegedly violated during a criminal trial.

The state, while attempting to settle with Orr, expressed interest in the buoy, with the plaintiff's lawyer saying his client felt pressed to give it up due to his financial situation.

*Edmund Fitzgerald* sunk in Lake Superior in 1975, taking with her almost 30 souls.

## Scenic hits a new low



**SCENIC** Luxury Cruises & Tours' *Scenic Eclipse II* has achieved its first submersible dive in New Caledonia (pictured **inset**), visiting hidden reefs, a historic shipwreck, and thriving marine life 100 metres below the surface.

Guests aboard the *Neptune II* submersible experienced rare below-water perspectives at Tubou Reef off Amedee Islet, including views of the La Dieppoise shipwreck, a former wooden naval vessel.

*Neptune II* seats up to eight guests alongside an expert pilot, and can journey up to 100 metres beneath the surface.

*Eclipse II* is now cruising her final Oceania voyages before departing the region in Mar for the Mediterranean and the Baltics via the Caribbean.

Guests still have time to secure an all-verandah suite on board

for a close-to-home journey, from East Antarctica to New Caledonia, Fiji, Norfolk Island, French Polynesia, and the Marquesas.

They can also enjoy on-water experiences by Zodiac, kayak and stand up paddleboard, as well as above-horizon perspectives from the two state-of-the-art on-board helicopters, guided by the specialist Discovery Team.

Scenic's submersibles have become a key part of the product offering of their Discovery Yachts, with the newly announced *Scenic Ikon* (CW 04 Nov) to feature *Scenic Neptune III. MS*

## Heritage adds

**NEW** departures have been announced by Heritage Expeditions as part of its 2027 Kiwi cruise season.

The line will sail an additional two departures of its five-day 'Unseen Queen Charlotte Sound: A Walking Cruise of Queen Charlotte Sound'.

Heritage will also add two more seven-day 'Southern Fiords Discovery: A Deep Exploration of Fiordland's Southern Fiords' voyages.

All of the cruises, which are on sale now, will sail aboard the line's highly sought after *Heritage Explorer*.

## CRUISE WEEKLY On Board: MS Noordam



### Christmas on board

Holland America Line certainly makes the most of the festive season, with *Noordam* decked out from top to bottom with gorgeous Christmas decorations. A key highlight in the deck 1 atrium area is a lavish display of gingerbread houses created by the onboard pastry chefs, complete with flashing lights and toy trains driven by miniature elves.



Keep your eyes peeled for a 5 January launch!

**WIN your share of 1 MILLION POINTS**

**PARTNERSFIRST**  
REWARDS

**COMING SOON!**

**Sign up to Norwegian Central and Partners First Rewards today to stay in the know**